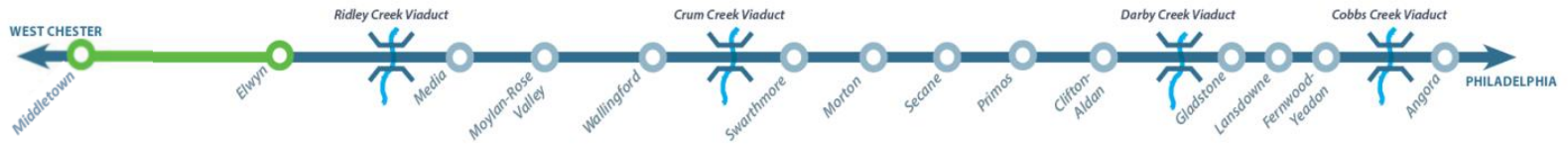


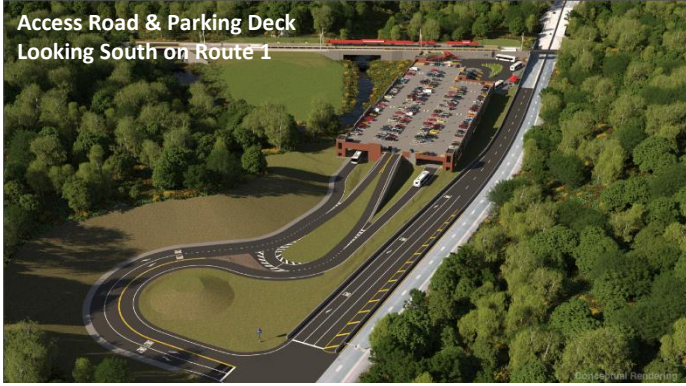
# ELWYN TO WAWA

## SERVICE RESTORATION PROJECT

MIDDLETOWN TOWNSHIP AND CHESTER HEIGHTS BOROUGH  
DELAWARE COUNTY, PA



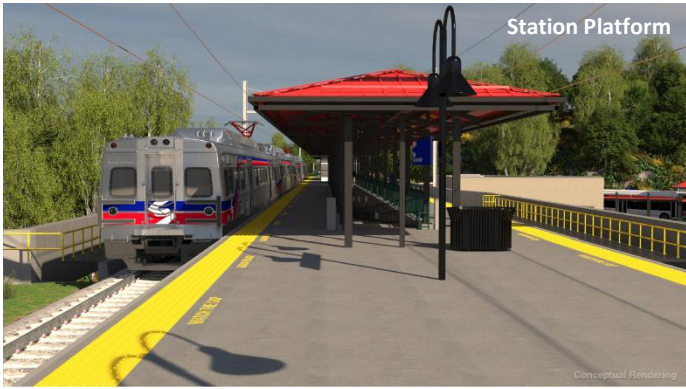
Access Road & Parking Deck  
Looking South on Route 1



Station & Bus Loop



Station Platform



Crew Reporting Facility  
Lenni Road



# Middletown Station DESIGN OPEN HOUSE

**THURSDAY, AUGUST 8, 2019**

**5:00 PM – 7:00 PM**

**Middletown Township Building  
27 N. Pennell Road  
Lima, PA 19037**

As part of the ongoing **Elwyn to Wawa Service Restoration Project**, SEPTA this fall will begin work on the final phase of the project – construction of the train station and associated facilities. SEPTA will be presenting to the Middletown Township Planning Commission on August 13 and is hosting this Open House for residents to meet with SEPTA representatives and learn more about the station design and other planned work during this phase:

- Station building & passenger platform facilities
- A parking deck with approximately 600 parking spaces
- New station access road with signalized intersection to US 1
- SEPTA railroad crew facility located adjacent to Lenni Road
- Maintenance bldg. on site of existing Lenni Training facilities

For more information, please contact: [ElwyntoWawa@septa.org](mailto:ElwyntoWawa@septa.org)  
or visit <http://septa.org/rebuilding/station/elwyn-wawa.html>